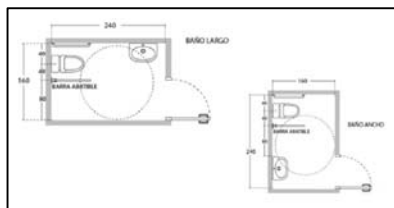
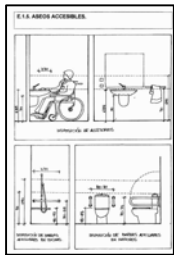
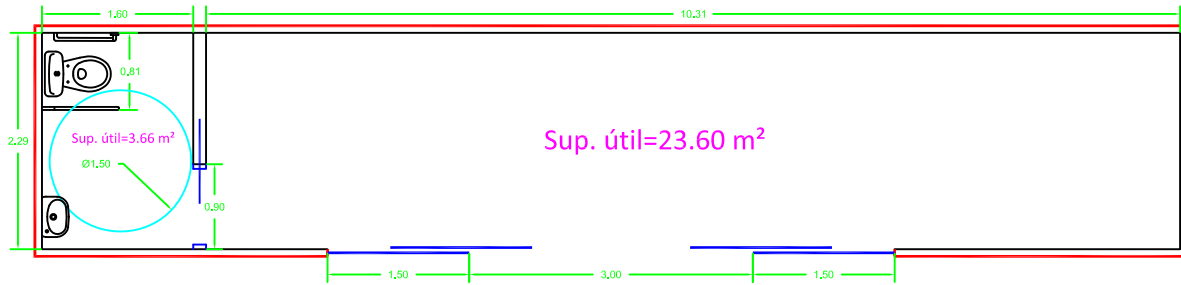




DISTRIBUCIÓN

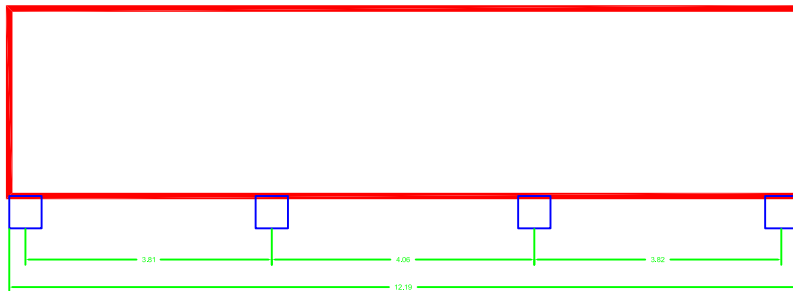


HORMIGÓN EN MASA 0,50 X 0,50 m

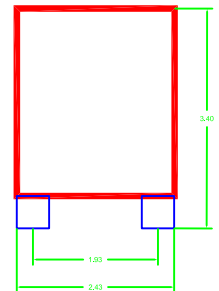
PLANTA



ALZADO



SECCIÓN



PROYECTO ATEA

PLANO DE: DISTRIBUCIÓN CONTAINER

ESCALA **1:100**

PROMOTOR

IES CABO BLANCO

DIRECCION

Calle Albariza, 37, 38626 Cabo Blanco, Santa Cruz de Tenerife, Santa Cruz de Tenerife

REF. CATASTRAL:

5771301CS3057S0001TT

ARQUITECTO TÉCNICO:

LUIS M. PÉREZ PINERO

C/DADE PRINCIPAL, 10 - 4º - P.O. 4. 35010 PALMA (CB. 800-01-0000)

